

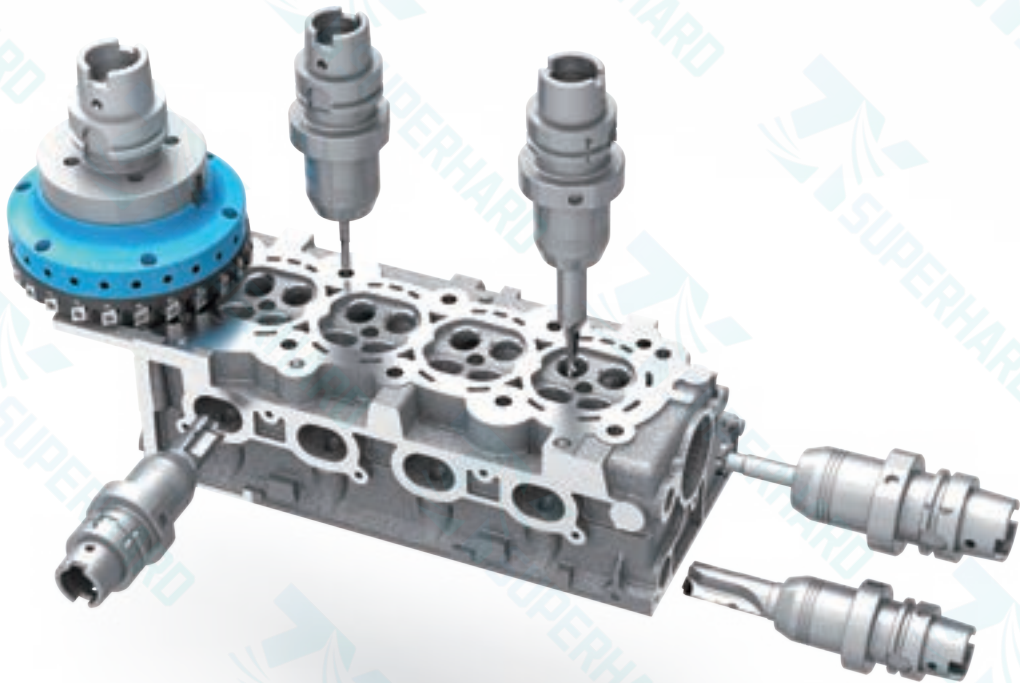
Zhengzhou Zhongyuan Super Hard Tools Co.,Ltd



Address : AUX Industrial Park, Zhengzhou City, Henan Province, China
Email : info@zydiamondtools.com | zysuperhardtools@foxmail.com
WhatsApp : +86-13526572721

mainly supply customized

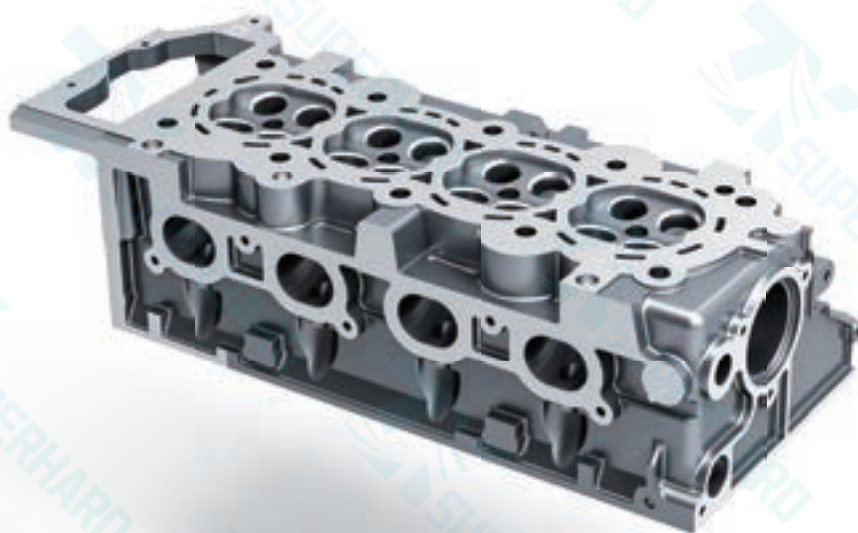
Non-standard tool application solutions



铝合金发动机缸盖加工

Aluminum alloy engine cylinder head processing

Cylinder Head



2-1 面铣刀盘
 $n=12000\text{r/min}$
 $fz=0.05\text{mm/z}$



2-4 三面刃铣刀
 $n=6000\text{r/min}$
 $fz=0.03\text{mm/z}$



2-2 阶梯钻铰刀
 $n=4000\text{r/min}$
 $fz=0.04\text{mm/z}$



2-5 底铰铰刀
 $n=4000\text{r/min}$
 $fz=0.03\text{mm/z}$



2-3 阶梯铰刀
 $n=5500\text{r/min}$
 $fz=0.05\text{mm/z}$



2-6 阶梯铰刀
 $n=3500\text{r/min}$
 $fz=0.02\text{mm/z}$

Steering Gear



3-1 阶梯钻铰刀
n=4500r/min
fz=0.03mm/z



3-4 多阶梯铰刀
n=4000r/min
fz=0.08mm/z



3-2 反倒角铣刀
n=3500r/min
fz=0.06mm/z



3-5 多阶梯槽铣刀
n=3500r/min
fz=0.03mm/z



3-3 单阶梯铰刀
n=3500r/min
fz=0.1mm/z

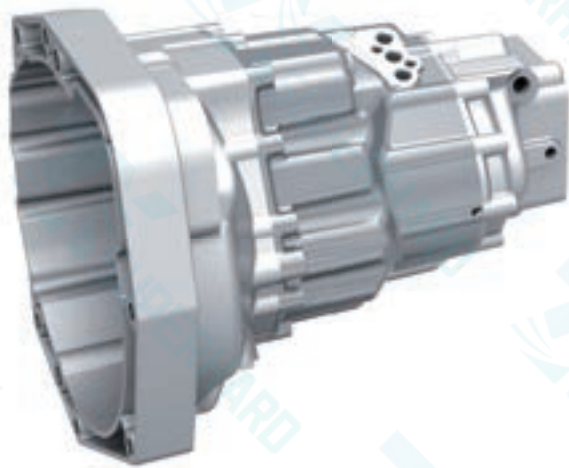
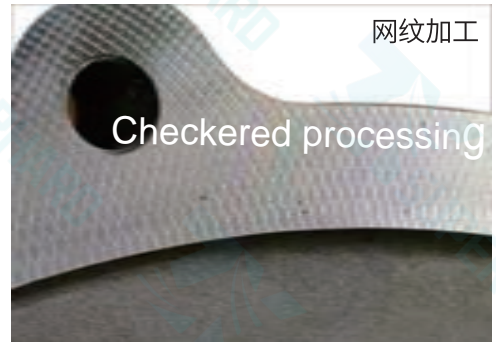


3-6 套铣刀
n=3500r/min
fz=0.055mm/z

变速箱壳体油底壳加工

Gear-box Oil Pan processing

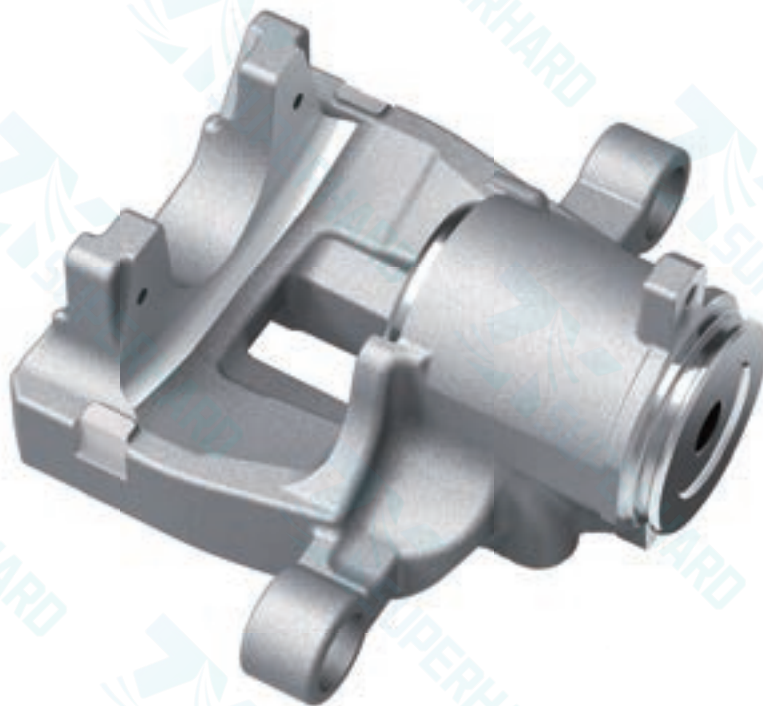
Gear-box
Oil Pan



刹车钳体加工

Brake Caliper processing

Brake Caliper



5-1 三面刃铣刀盘

$n=4500\text{r/min}$
 $fz=0.035\text{mm/z}$



5-2 套铣槽刀

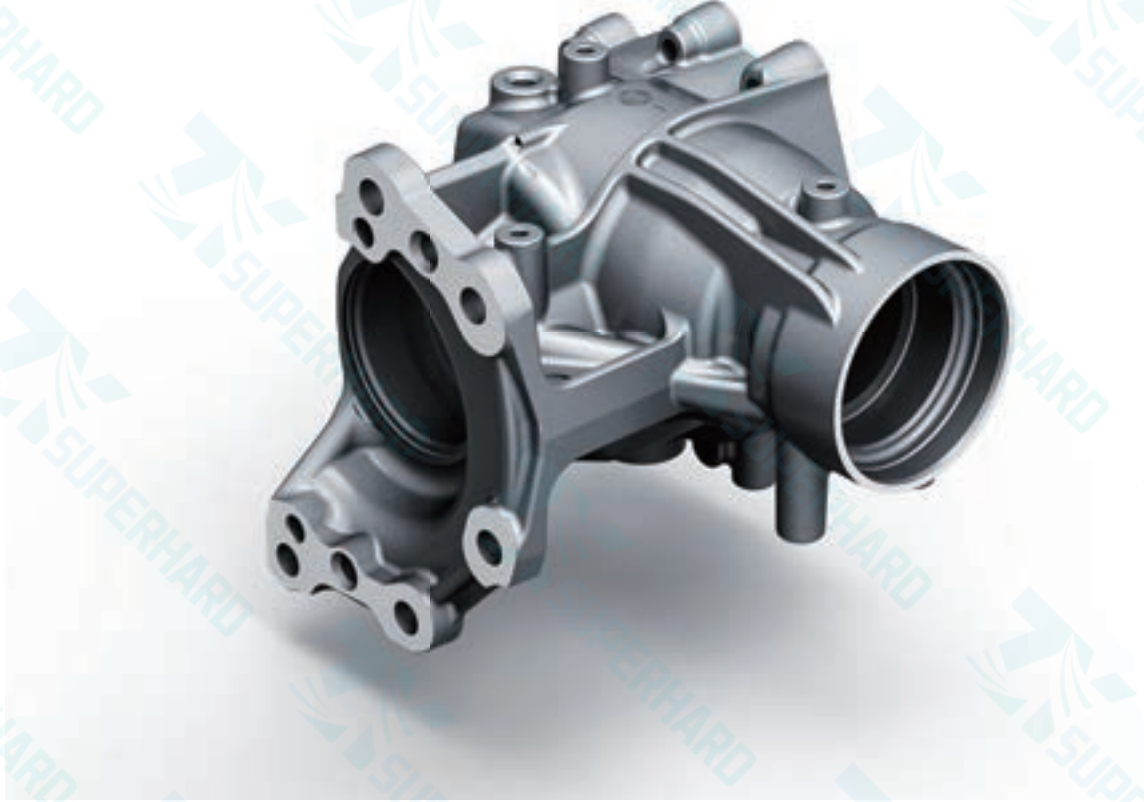
$n=6000\text{r/min}$
 $fz=0.05\text{mm/z}$



5-3 槽铣刀

$n=6500\text{r/min}$
 $fz=0.045\text{mm/z}$

Throttle Valve



6-1 成型铣刀
 $n=3500\text{r/min}$
 $fz=0.045\text{mm/z}$



6-5 阶梯钻铰刀
 $n=3600\text{r/min}$
 $fz=0.015\text{mm/z}$



6-2 侧面铣刀
 $n=4000\text{r/min}$
 $fz=0.055\text{mm/z}$



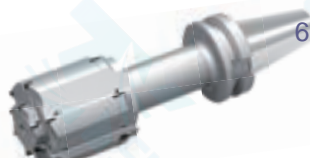
6-6 阶梯钻铰刀
 $n=3750\text{r/min}$
 $fz=0.025\text{mm/z}$



6-3 阶梯铰刀
 $n=4200\text{r/min}$
 $fz=0.015\text{mm/z}$



6-7 深孔钻铰刀
 $n=3500\text{r/min}$
 $fz=0.012\text{mm/z}$



6-4 密齿多阶梯铰刀
 $n=8000\text{r/min}$
 $fz=0.05\text{mm/z}$

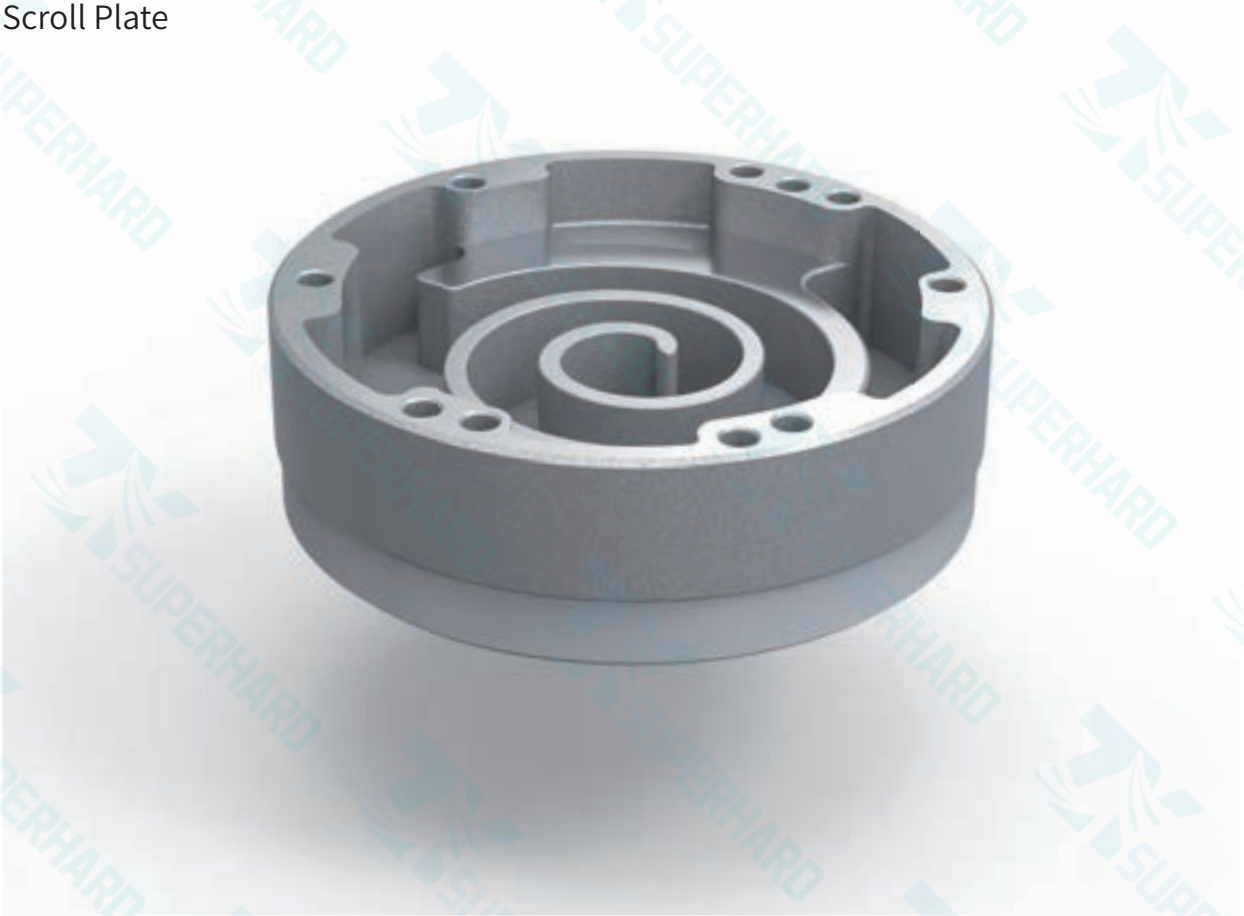


6-8 可调精铰刀
 $n=5500\text{r/min}$
 $fz=0.05\text{mm/z}$

涡旋盘加工

Scroll Plate processing

Scroll Plate



7-1 钻铰刀
n=4500r/min
fz=0.05mm/z

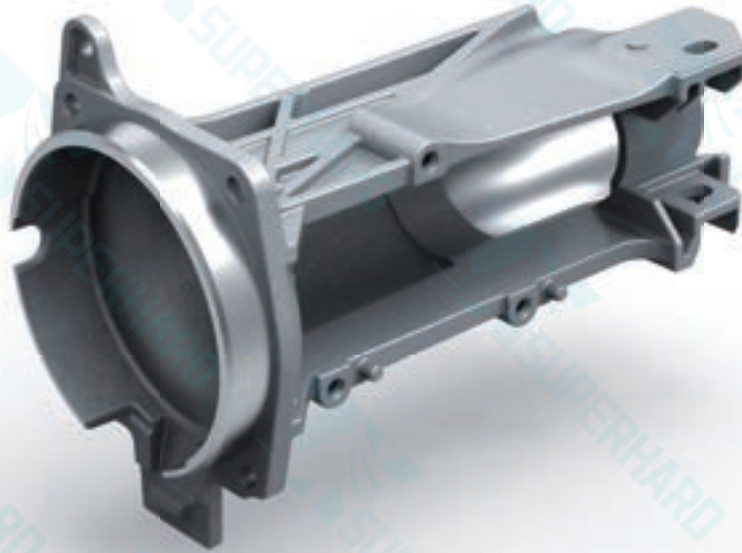


7-2 侧面铣刀
n=39800r/min
fz=0.10mm/z



7-3 玉米铣刀
n=39800r/min
fz=0.05mm/z

Aluminium Products



8-1 反铣刀
n=8000r/min
fz=0.05mm/z



8-2 可调精镗刀
n=8000r/min
fz=0.035mm/z



8-3 三面刃铣刀
n=8000r/min
fz=0.065mm/z